



## Collaborative on Health and the Environment - Washington



Biweekly Bulletin February 10, 2010

This bulletin lists upcoming events plus recent announcements, news and journal articles, calls for proposals and other items related to learning environmental contributors to human health in Washington State and the Pacific Northwest. They are archived and searchable on our website: <http://washington.chenw.org/bulletins.html>

### CHE-WA Highlights

#### Additions to CHE's Online Calendar

CHE's searchable [calendar of events](#) now lists upcoming deadlines for funding proposals and calls for conference abstracts. We invite partners to submit events and deadlines for inclusion in the calendar.

#### New members

CHE-Washington welcomes these new members:

- Sultana Afrooz, DO, Laurel, Maryland
- Erica Finsness, MHP, Seattle
- Alexandra Klug, Olympia
- Mary Rivkin, PhD, Baltimore, Maryland

For a searchable database of organizations with which CHE-WA members are affiliated, please visit the CHE-WA website: <http://washington.chenw.org/members.html>

### Lessons Learned

#### Dietary Supplements - Who's in Charge?

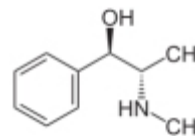
by Steven G. Gilbert, PhD, DABT

Steven Scott Bechler (November 18, 1979 - February 17, 2003) was a Major League Baseball pitcher for the Baltimore Orioles in 2002. Bechler died at the beginning of spring training with the Orioles in 2003 after using the herbal supplement ephedra. He was using the supplement in an effort to lose weight.

Ephedra, from the plant *Ephedra sinica*, has been used as a herbal remedy in traditional Chinese medicine for 5,000 years for the treatment of asthma and hay fever, as well as for the common cold. Known in Chinese as ma huang, ephedra is a stimulant which constricts blood vessels and increases blood pressure and heart rate.

Ephedra-containing dietary supplements have been linked to serious side effects and a number of deaths. Initial efforts to test and regulate ephedra were defeated by lobbying and political pressure from the dietary-supplement industry. Ultimately, in response to evidence of adverse effects and deaths related to ephedra, the FDA banned the sale of ephedra-containing supplements on April 12, 2004.

Under the Dietary Supplement Health and Education Act of 1994, the Food and Drug Administration (FDA) regulates dietary supplements as foods, and not as drugs. While



pharmaceutical companies are required to obtain FDA approval proving the safety or effectiveness of their products prior to their entry into the market, dietary supplements, like food, do not need to be pre-approved by FDA before they can enter the market. This policy does not provide members of the public with adequate information to protect their health.

Learn more: <http://toxipedia.org/x/aQs>

### **Looking back to go forward**

*Lessons Learned* is a CHE-WA bulletin feature focusing on an historical event that provides an important lesson for ensuring a more sustainable and healthy environment. Please feel free to send suggestions to [Steve Gilbert](#).

## **Announcements**

*A daily news feed with articles and announcements is available on CHE's website:*  
<http://www.healthandenvironment.org/news/announce>.

### **[New report: Mind, Disrupted.](#)**

"Mind, Disrupted: How Toxic Chemicals May Affect How We Think and Who We Are" examines 61 toxic chemicals present in project participants in the context of rising rates of autism, attention-deficit hyperactivity disorder, and other learning and developmental disabilities.

### **[Call for applications: National Environmental Leadership Award in Asthma Management.](#)**

The US Environmental Protection Agency invites applications. The 2010 award will go to one program in each of the three categories (health plans, health care providers and communities in action) for their outstanding leadership in improving health outcomes for people living with asthma. The deadline for submission is March 16, 2010.

### **[Call for proposals: Community Action for a Renewed Environment.](#)**

The US Environmental Protection Agency is making nearly \$2 million available in 2010 to reduce pollution at the local level through a community-based program that builds partnerships to help the public understand and reduce toxic risks from numerous sources close to home. Proposals are due by March 9, 2010.

### **[Job opening: Los Angeles, California.](#)**

Occidental College invites applications for a one-year full-time visiting position at the assistant professor level for the Fall 2010 and Spring 2011 semesters in the Urban and Environmental Policy (UEP) Program. All materials are due by April 1, 2010.

### **[Job opening: New York State.](#)**

The Center for Health, Environment & Justice is seeking a part-time campaign organizer for a new New York State campaign to green schools inside and out. Position can be located at a home office, with frequent travel to Albany, New York City and other targeted urban areas or college campuses.

### **[Job opening: Oakland, California.](#)**

Asian Communities for Reproductive Justice (ACRJ) is seeking an energetic, organized, motivated individual with experience in grassroots organizing and movement building to join our team as the EMERJ Movement Building Manager.

### **[Job opening: Portland, Oregon.](#)**

Josiah Hill III Clinic has an opening for an 0.8 FTE program coordinator to be responsible for leading and supporting project delivery, predominately to low-income and diverse communities, in the Portland Metro area. The application deadline is Sunday February 21st. Email a cover letter, resume, and three references to [jobs@jhillclinic.org](mailto:jobs@jhillclinic.org), listing Program Coordinator in the subject line.

## **Upcoming Events**

**Online Calendar.** These and more upcoming events are listed in a searchable calendar: <http://www.chenw.org/cgi-bin/searchevents.cgi>.

**1) Air Pollution and Stroke: Timing Is Everything**

Thursday February 11, 2010

12:30 - 1:20 p.m.

Seattle, Washington

at the University of Washington School of Public Health, room HSB D-209

Sponsor: University of Washington Department of Environmental and Occupational Health Sciences

The speaker will be Murray Mittleman, DrPH, associate professor of the Department of Epidemiology at Harvard School of Public Health.

Price: free

[Visit the website](#)

**2) Incorporating Health Impact Assessment into Community Design and Transportation Decisions**

Tuesday February 23, 2010

noon - 1:00 p.m. Pacific time

Sponsor: Northwest Center for Public Health Practice

The design of the built environment, including land-use and transportation decisions, affects health in many ways, including its impacts on physical activity, air quality, motor-vehicle and pedestrian injuries, social capital, mental health and environmental justice. Health impact assessment is a new tool that can improve communication between public-health professionals and urban planners, transportation planners, and other decision makers so that health issues are more likely to be considered in decisions about community design.

Price: unknown

[Visit the website](#)

Contact: Sarah Paliulis, [paliulis@u.washington.edu](mailto:paliulis@u.washington.edu)

**3) Reducing PBDEs in the Columbia River Basin**

Thursday February 25, 2010

Portland, Oregon

at the Ambridge Events Center, 1333 NE Martin Luther King Drive

Sponsor: Columbia River Toxics Reduction Working Group

This watershed-based workshop will provide a forum to discuss strategies for reducing toxic contamination in the Columbia River Basin and involve local watershed councils, communities, agriculture, industry, tribal, federal and state governments, and nonprofit organizations. Please preregister by February 15th.

Price: unknown

[Visit the website](#)

Contact: Jason Braaten, 503-326-3250 or [braaten.jason@epa.gov](mailto:braaten.jason@epa.gov)

**4) Leadership In Green Health Care Course**

February 27 - April 24, 2010

Sponsor: Teleosis Institute

Leadership In Green Health Care prepares health professionals to become leaders in the

emerging discipline of Sustainable Medicine. Sustainable medicine recognizes the link between the environment, medicine and human health and seeks to provide better health care while protecting our limited environmental and medical resources. The Leadership in Green Health Care course reviews the most up-to-date theory and research behind sustainable medicine and introduces participants to the best practices for initiating green health care -- from greening their offices, to offering affordable and renewable medical treatments, and promoting community and environmental health. Participants collaborate online to exchange strategies and pioneer ideas for effecting change within their communities and medical practices. The online, interactive dialogue among like-minded professionals creates a supportive and inspiring learning environment. Continuing education credits are available for physicians and nurses.

Price: \$945 for nonmembers, \$695 for members of Practice Greenhealth, \$350 for students in the health-care field

[Visit the website](#)

Contact: see the [Contact page](#)

#### **5) Environmental Justice and Air Quality at the US-Mexico Border: Case Studies**

Thursday March 4, 2010

12:30 - 1:20 p.m.

Seattle, Washington

at the University of Washington School of Public Health, room HSB D-209

Sponsor: University of Washington Department of Environmental and Occupational Health Sciences

The speaker will be Dr. PJE Quintana, associate professor at San Diego State University.

Price: free

[Visit the website](#)

#### **6) Second Annual Northwest Environmental Health Conference**

March 5 - 6, 2010

Portland, Oregon

at Oregon Health and Sciences University

Sponsor: Oregon Environmental Council, Oregon Student Nurses Association, Oregon Chapter of Physicians for Social Responsibility, Multnomah County Environmental Health Services, Health Care Without Harm and others

This conference will host leading scientists, researchers and healthcare professionals in the field of environmental health and will focus on stimulating robust dialogue regarding the impact of the environment on health and healthcare practices. March 5th will cover current basic science, new approaches to patient care, facilities management and community practice, as well as policy issues surrounding environmental health. March 6th will be comprised of workshops providing hands-on training utilizing environmental health technology and toolkits for practitioners, educators, and advocates.

Price: March 5th: \$50 or \$25 for students; CNE credits and/or parking are available for additional fees

March 6th: Workshops are \$25 or \$15 for students

[Visit the website](#)

#### **7) Elements of the New Economy: Green Chemistry in the Pacific Northwest**

Monday and Tuesday, March 8 - 9, 2010

Seattle, Washington

at the Edgewater Hotel, downtown

Sponsor: The Bullitt Foundation, Kendeda Fund, Health and Environmental Funders

## Network, Advancing Green Chemistry, and Environmental Health Sciences

This is a special briefing for funders to explore green chemistry and its current and future contributions to the Pacific Northwest's economy. What would the Pacific Northwest economy look like if designed by Green Chemists? How would life in the Pacific Northwest be different if Green Chemistry were widely adopted?

Price: There is no cost to attend, though participants must cover their own travel and lodging.

[Visit the website](#)

Contact: Advancing Green Chemistry, 434-220-3701 or [registrar@advancinggreenchemistry.org](mailto:registrar@advancinggreenchemistry.org)

## News and Journal Articles

### [Mediterranean diet may lower risk of brain damage that causes thinking problems.](#)

*Tuesday, February 09, 2010*

The study found that people who ate a Mediterranean-like diet were less likely to have brain infarcts, or small areas of dead tissue linked to thinking problems. Newswise.

### [Herbal cures 'a toxic mix.'](#)

*Tuesday, February 09, 2010*

Many herbal medicines are contaminated with potentially lethal doses of heavy metals such as arsenic and mercury, belying their reputation as low-risk "natural" products. Sydney Australian, Australia.

[See a related article: [Selenium toxicity in dietary supplements](#)]

### [Are the undisclosed ingredients in lipstick bad for you?](#)

*Tuesday, February 09, 2010*

Makeup - many of us love it - but most of us have no idea that some of our favorite beauty products contain harsh chemicals and potentially harmful ingredients. Daily Green.

### [Study links estrogen hormone therapy to asthma.](#)

*Tuesday, February 09, 2010*

Estrogen-only hormone replacement therapy may increase the risk of developing asthma after the menopause, scientists said on Monday. Reuters Health.

[See a related article: [Infection, early birth linked to asthma](#)]

### [Soft drink consumption may increase risk of pancreatic cancer.](#)

*Tuesday, February 09, 2010*

Drinking two or more soft drinks a week can double the risk of developing pancreatic cancer, a new study claims. London Daily Telegraph, United Kingdom.

### [Heart to heart.](#)

*Monday, February 08, 2010*

For all the strides we've made against heart disease, it still accounts for 26 percent of all deaths in the U.S. A push for better preventive care hasn't solved the problem. So four leading cardiologists open up about how to combat America's No. 1 killer. Newsweek.

### [Credibility key in 9/11 health trials.](#)

*Monday, February 08, 2010*

As the first cases in a massive battle over illnesses linked to 9/11 near trial, an Associated Press investigation has found that several of the initial 30 suits contain inconsistent or exaggerated claims about how the workers got sick or how much time they spent at ground zero. Associated Press.

### [China threatens world health by unleashing waves of superbugs.](#)

*Sunday, February 07, 2010*

Studies in China show a "frightening" increase in antibiotic-resistant bacteria such as

staphylococcus aureus bacteria, also know as MRSA . There are warnings that new strains of antibiotic-resistant bugs will spread quickly through international air travel and international food sourcing. London Telegraph, United Kingdom.

### **[The total antioxidant content of more than 3100 foods, beverages, spices, herbs and supplements used worldwide.](#)**

*Sunday, February 07, 2010*

This database is to our best knowledge the most comprehensive Antioxidant Food Database published and it shows that plant-based foods introduce significantly more antioxidants into human diet than non-plant foods. Nutrition Journal.

### **[Worrisome chemical found in canned foods.](#)**

*Sunday, February 07, 2010*

A new Consumers Union study shows just one serving of tested canned vegetable soup has nearly twice the amount considered average exposure. In fact, researchers found BPA in most of the 19 tested name-brand canned foods. Oklahoma City Oklahoman, Oklahoma.

*[See related articles about research: [Study finds a link between plastics chemical BPA and childhood asthma](#), [Human placenta cells die after BPA exposure](#) and [BPA affects male rat fertility for generations](#), plus articles about legislative action from Wisconsin: [State Senate OKs BPA ban in baby bottles](#) and from Washington State: [Senate votes ban on BPA in kids' containers](#)]*

### **[Are birth defects caused by IVF?](#)**

*Sunday, February 07, 2010*

Researchers will launch a major study next week to test the theory, shown in lab studies, that test-tube babies are more likely to suffer genetic abnormalities, putting them at higher risk of chronic diseases such as diabetes and heart disease in later life. London Daily Express, United Kingdom.

### **[Toxic trinkets.](#)**

*Sunday, February 07, 2010*

Cadmium, a carcinogenic heavy metal, has surfaced as the latest villain lurking in the kids' toy and jewelry aisles. Montgomery Advertiser, Alabama.

*[See a related article: [Walmart pendants recalled as Disney bans cadmium](#) and another from Qatar: [New regulations to set import standards](#)]*

### **[The chemical revolt.](#)**

*Sunday, February 07, 2010*

BPA in baby bottles. Phthalates in children's books. Lead in toys. As parents' awareness of potential toxins in the home has grown in recent years, so has their anxiety. Minnesota has helped lead the way to regulate worrisome chemicals, and federal reform. St. Paul Pioneer Press, Minnesota.

*[See related articles: [Put up your dukes at home: The hazard could even be in your tap water](#), [Old story of pollution: new urgency this time](#) and [Congressional hearing focuses on regulating household toxins](#)]*

### **[USDA ends livestock tracking program.](#)**

*Saturday, February 06, 2010*

The Obama administration is killing a national livestock tracking program that never got off the ground amid widespread complaints by farmers and ranchers. The federally run ID system was proposed after the discovery of the nation's first case of mad cow disease in 2003. Des Moines Register, Iowa.

### **[Ancient human teeth show that stress early in development can shorten life span.](#)**

*Friday, February 05, 2010*

Ancient human teeth are telling secrets that may relate to modern-day health: Some stressful events that occurred early in development are linked to shorter life spans. Science Daily.

### **[Deadly disease on the rise.](#)**

*Friday, February 05, 2010*

Asbestos was banned in most buildings in the 1970s, but the number of mesothelioma cases in Milwaukee and around the country keeps going up. Milwaukee WTMJ-TV, Wisconsin.

**[Dust harbors new fire retardants associated with hormone, sperm changes.](#)**

*Friday, February 05, 2010*

As one class of flame retardants is phased out due to health concerns, new types [organophosphorous flame retardants] -- sometimes with widespread exposure and unknown effects -- may be phased in. Environmental Health News.

[See a related article about PBDE retardants: [Scientists link flame retardants and reduced human fertility](#)]

**[USDA tightens requirements to assure school lunch safety.](#)**

*Friday, February 05, 2010*

The USDA announced sweeping steps Thursday to "assure the safety and quality of food" purchased for the National School Lunch Program, which includes tightening requirements on ground beef suppliers, testing the beef more often and more thoroughly, and improving communications within the USDA. USA Today.

**[ADHD and lead: Poisoning the mind.](#)**

*Friday, February 05, 2010*

A just published paper lends supports to the idea that attention deficit and hyperactivity disorder may be caused by exposure to lead. Economist.

[See a related article: [Exposure on tap: Drinking water as an overlooked source of lead](#)]

**[Urinary concentrations of metabolites of pyrethroid insecticides in the general U.S. population: National Health and Nutrition Examination Survey 1999-2002.](#)**

*Thursday, February 04, 2010*

Pyrethroid insecticide exposure in the U.S. population is widespread and their presence in the urine of US residents indicate that children may have higher exposures than adolescents and adults. Environmental Health.

[See a related article: [Comparison of current-use pesticide and other toxicant urinary metabolite levels among pregnant women in the CHAMACOS Cohort and NHANES](#)]

**[Some skin-lightening creams conceal dark side.](#)**

*Thursday, February 04, 2010*

In pursuit of a lighter complexion, some people could be putting their health at risk. Tampa Tribune, Florida.

**[EPA rule could spike home repair costs.](#)**

*Thursday, February 04, 2010*

New rule mandates contractors must be certified for projects that could disturb lead-based paint in buildings constructed before 1978 -- to prevent lead contamination. Grand Rapids WOOD-TV, Michigan.

[See a related article: [Removing paint now requires extra caution](#)]

**[Consumer exposure to biocides - identification of relevant sources and evaluation of possible health effects.](#)**

*Wednesday, February 03, 2010*

Exposure to biocides from household products may contribute to induction of sensitization in the population. Environmental Health.

**[Experts say 40 percent of cancers could be prevented.](#)**

*Wednesday, February 03, 2010*

Forty percent of the 12 million people diagnosed with cancer worldwide each year could avert the killer disease by protecting themselves against infections and changing their lifestyles, experts said Tuesday. Reuters Health.

**[Study finds Parkinson's disease hot spots.](#)**

*Wednesday, February 03, 2010*

People with Parkinson's disease are more likely to be found in the Northeast and

Midwest, and whites and Hispanics are more likely to have it than blacks and Asians. Those are two of the key findings of a new study on the debilitating neurological disorder. Suncoast News, Florida.

[See a related article: [Industrial solvent linked to increased risk of Parkinson's disease](#)]

#### **Researchers find clue to SIDS in brain chemical.**

Wednesday, February 03, 2010

Researchers looking for the cause of sudden infant death syndrome found reduced levels of the brain chemical serotonin among a group of babies who died from SIDS, compared with other babies. Wall Street Journal.

#### **Obese boys more likely to begin puberty late: Study finds fat-puberty link that is opposite of girls'.**

Wednesday, February 03, 2010

Male children whose body-mass index is consistently highest through early and mid-childhood are significantly more likely than thinner boys to have delayed puberty. Los Angeles Times, California.

#### **Cadmium found in adult jewelry: 1 store pulls item.**

Wednesday, February 03, 2010

Concern about the heavy metal cadmium in jewelry grew Tuesday as a California environmental group said new testing of adult necklaces and bracelets bought at three leading retailers detected high levels of the toxic material -- as much as 75 percent by weight. Associated Press.

[See related articles: [2 stores pull necklaces on toxic cadmium concern](#) and [Vermont fights to get lead out: state settles with discount retailer over toxic jewelry](#)]

#### **A study finds mental benefit of fish oil.**

Tuesday, February 02, 2010

Fish oil pills may be able to spare some young people with signs of mental illness from a progression into fully developed schizophrenia, according to a preliminary study of 81 patients in Austria. Wall Street Journal.

#### **NIH policy urges CT makers to track radiation dose.**

Tuesday, February 02, 2010

The National Institutes of Health plans to require that all makers of CT and other radiation-producing scanners used at NIH clinics have software that tracks a patient's radiation dose and logs it into an electronic medical record. Reuters.

[See related articles: [As technology surges, radiation safeguards lag](#), [Medical group urges new rules on radiation](#), [Radiation dose less with digital mammograms](#), [Airport scanners will soon use radiation to detect explosives and chemicals](#) and [Body scanning raises radiation exposure, committee says](#)]

#### **Prison computer recycling put staff, inmates at risk, NIOSH finds.**

Monday, February 01, 2010

Federal prisoners and staff overseers were exposed for years to excessive levels of toxic heavy metals during computer recycling operations, according to a report from the National Institute of Occupational Safety and Health. Government Computer News.

#### **TTC buses idle ... and idle in the cold.**

Monday, February 01, 2010

Idling buses are left to spew harmful diesel fumes because expensive Swedish technology installed nearly a decade ago has never worked properly. Toronto Sun, Ontario.

#### **The intellectual property fight that could kill millions.**

Monday, February 01, 2010

The hothouse environment of Indonesia is ground zero for a potential bird flu pandemic. But a fight over ownership of flu genes is blocking the efforts to track deadly infections on the move. Discover.

#### **Fluorochemicals go short.**

*Monday, February 01, 2010*

Nearly all humans, and a large proportion of wildlife, are contaminated with environmentally persistent long-chain perfluoroalkyl compounds. That revelation, around for a decade now, has brought dramatic change to the fluorochemicals industry. Chemical & Engineering News.

**[Disposing of old medicines can be tricky business.](#)**

*Monday, February 01, 2010*

Researchers have long been finding residues from pharmaceuticals and personal care products in our lakes and rivers. Some of them are endocrine disruptors and can cause fish to develop both male and female characteristics. Minnesota Public Radio, Minnesota.

**[Soy formula associated with higher risk of fibroids in women.](#)**

*Monday, February 01, 2010*

Women who were fed soy-based infant formula as babies are 25 percent more likely to develop uterine fibroids than those who were breastfed or given milk-based formula. Environmental Health News.

**[Environmental toxins and learning disorders.](#)**

*Monday, February 01, 2010*

An aggregate of chemicals in the environment are likely leaching into our children's bodies -- both before and after birth -- and could be wreaking havoc with their brains. The Parent Paper, New Jersey.

**[WHO urging public to have homes tested for radon.](#)**

*Sunday, January 31, 2010*

Central Kentucky's karstlands have long been a healthy source of tourism dollars, but that same topography carries increased health risks from radon gas, the leading source of lung cancer for nonsmokers. Bowling Green Daily News, Kentucky.

**[Climate change to hit public health hard.](#)**

*Sunday, January 31, 2010*

Climate change will have an adverse effect on public health -- particularly that of children -- including malnutrition, waterborne diseases, cholera, skin and eye diseases, and cardiovascular diseases, environmental health experts warned at a forum on Saturday. Dhaka Daily Star, Bangladesh.

**[Leaks imperil nuclear industry.](#)**

*Sunday, January 31, 2010*

A leak of radioactive water at Vermont Yankee, along with similar incidents at more than 20 other US nuclear plants in recent years, has kindled doubts about the reliability, durability, and maintenance of the nation's aging nuclear installations. Boston Globe, Massachusetts.

[See a related article: [Expert: No level of tritium safe](#)]

**[Grandma breathes easier in smoke-free building.](#)**

*Sunday, January 31, 2010*

The high rate of asthma typically found in kids in housing projects is among factors spurring Boston to ban smoking in public housing. Mold, poor ventilation and pests also exacerbate asthma, but second-hand smoke is a main contributor, experts say. Boston Herald.

[See a related article: [Thirdhand smoke forms cancer-causing residue indoors that lasts](#)]

**[Air pollution exposure during pregnancy and reduced birth size: a prospective birth cohort study in Valencia, Spain.](#)**

*Saturday, January 30, 2010*

Findings from this study provide further evidence of the need for developing strategies to reduce air pollution in order to prevent risks to fetal health and development. Environmental Health.

**[Military environmental hazards bill faces hurdles.](#)**

*Saturday, January 30, 2010*

Congressional jurisdictional issues and Defense Department resistance to accepting responsibility for harming veterans and dependents are major impediments to passing a final bill and ultimately providing medical care. Salem News, Oregon.

[See related articles from the US: [Toxins in Camp Lejeune water 30 years ago still a problem](#), from the Philippines: [Decades later, U.S. military pollution in Philippines linked to deaths](#) and from Puerto Rico: [Island residents sue U.S., saying military made them sick](#)]

#### **Another look at Atrazine.**

Saturday, January 30, 2010

One of the most widely used herbicides in the U.S., Atrazine, is being reevaluated by the EPA. Some scientists say the weed killer negatively impacts the environment and human health. But Atrazine's parent company Syngenta stands behind its product. Living On Earth.

[See related articles: [EPA reviews hints of weed killer's fetal risks](#) and [Weed killer atrazine may be linked to birth defect](#)]

#### **Latest study says TCE worse than thought.**

Saturday, January 30, 2010

The Environmental Protection Agency has released a new report concluding that TCE, a pollutant found in much of Mountain View's groundwater, is definitely a carcinogen, a finding which could lead the agency to propose tougher cleanup standards. Mountain View Voice, California.

#### **Andrew Wakefield found 'irresponsible' by GMC over MMR vaccine scare.**

Friday, January 29, 2010

The doctor who claimed to have discovered a link between measles virus, bowel diseases and autism and thereby sparked widespread fear of the combined MMR jab, conducted unnecessary, invasive tests on children, the General Medical Council found. London Guardian, United Kingdom.

[See related articles: [Lancet retracts study tying vaccine to autism](#), [L.A. confidential: Seeking reasons for autism's rise](#) and [UC Davis study confirms link between advanced maternal age and autism](#)]

#### **Study: Mercury in canned tuna high.**

Friday, January 29, 2010

More than half of canned tuna samples from a local grocery store failed to meet the strict Environmental Protection Agency safety level for mercury in fish, according to a new study by University of Nevada, Las Vegas researchers. Las Vegas Review-Journal, Nevada.

#### **Omega-3 may reduce risk of dental disease: Study.**

Thursday, January 28, 2010

The average number of dental disease events was 1.5 times higher in people with low DHA levels, compared to those with the highest average levels of DHA, according to findings published in Nutrition. NutraIngredients.com.

#### **Prenatal phthalate exposure may alter children's behavior and cognitive function.**

Thursday, January 28, 2010

A study published January 28 in the peer-reviewed journal Environmental Health Perspectives suggests that women with higher exposure to phthalates during their pregnancy report more disruptive and problem behaviors in their children, using standardized measures. Newswise.

#### **Warning: Your cell phone may be hazardous to your health.**

Wednesday, January 27, 2010

Though the scientific debate is heated and far from resolved, there are multiple reports, mostly out of Europe's premier research institutions, of cell-phone and PDA use being linked to "brain aging," brain damage, early-onset Alzheimer's, senility, DNA damage, and even sperm die-offs (many men, after all, keep their cell phones in their pants pockets or attached at the hip). GQ.

[See a related journal article: [Mobile phone radiation health risk controversy: the](#)

[reliability and sufficiency of science behind the safety standards\]](#)

**[Asthma sufferers choke on new smog standards.](#)**

Wednesday, January 27, 2010

New emissions standards are not strong enough to protect Chicagoans with asthma, a leading environmental health expert is warning. Chicago Page One Examiner.

[See a related article: [Traffic marker? Early exposure to air pollution associated with childhood asthma, Residential traffic exposure, pulse pressure and C-reactive protein: consistency and contrast among exposure characterization methods](#) and [Association of biomarkers of systemic inflammation with organic components and source tracers in quasi-ultrafine particles](#)]

**[More states requiring 'green' cleaning products in schools, raising debate about cost, benefit.](#)**

Wednesday, January 27, 2010

More states are requiring schools and government buildings to use environmentally friendly cleaning products, raising debate about their costs and benefits. Supporters say laws are needed but critics oppose any mandates. Associated Press.

**[Orange County trial will focus on Botox's safety in children's cerebral palsy treatments.](#)**

Wednesday, January 27, 2010

Kristen Spears, who suffered from severe cerebral palsy, started getting Botox injections at age 6 - to calm her leg spasms. Instead, her mother alleges that the drug killed her. Los Angeles Times, California.

**[Don't let your baby swim.](#)**

Wednesday, January 27, 2010

Children who start swimming before the age of 2 [in chlorinated pools] may be at increased risk of a common infant lung infection, and possibly asthma and respiratory allergies later in life, a new study suggests. Reuters Health.

[See a related article: [Public swimming ups risk of gastrointestinal illness](#)]

The Collaborative on Health and the Environment offers this information as a service but does not endorse any of the events, articles or announcements.

Companion bulletins are available for different audiences:

- For those interested in general children's environmental health: [http://www.healthandenvironment.org/working\\_groups/childrens\\_health/bulletins](http://www.healthandenvironment.org/working_groups/childrens_health/bulletins)
- For those interested in environmental health and learning and developmental disabilities: <http://www.iceh.org/LDDIbulletins.html>

While there is overlap with this bulletin, there are some events and announcements unique to those bulletins.

If you would like to join the Collaborative on Health and the Environment (CHE) and the Washington State Regional Group, please complete the application on the CHE website: <http://www.healthandenvironment.org/application> Joining CHE means receiving up to four email messages a month from the CHE National listserv. CHE costs nothing to join and the benefit is shared information and opportunities for further engagement, if you choose. Be sure to mark that you want to join the Washington State regional group at the bottom of the application.

Nancy Snow  
Collaborative on Health and the Environment

[Join Our Mailing List!](#)

[Forward email](#)

✉ [SafeUnsubscribe®](#)



Email Marketing by



Collaborative on Health and the Environment | P.O. Box 316 | Bolinas | CA | 94924